

Warm-up Session

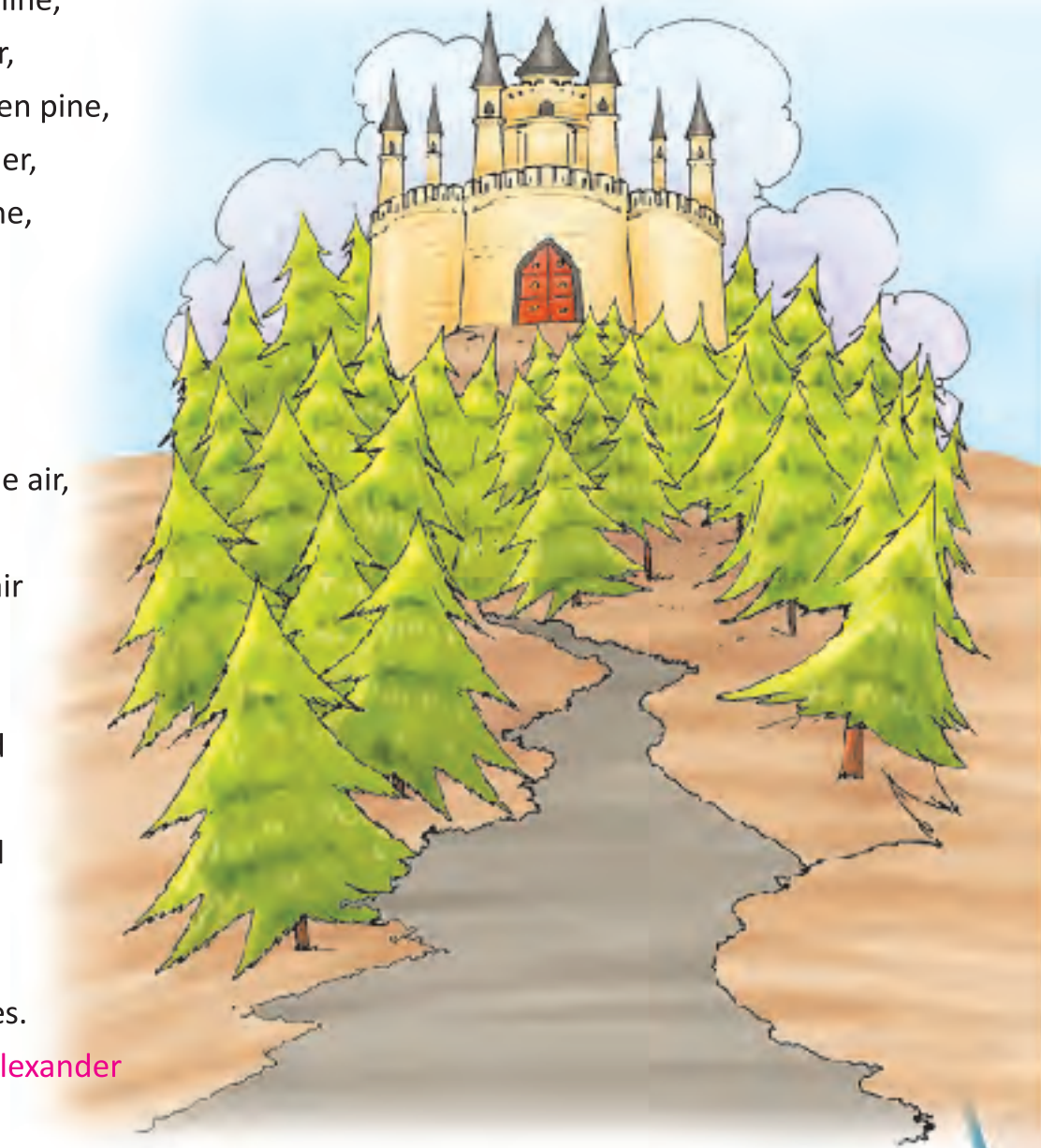
We see many amazing things and places in dreams. Do they always come true? Let's read the poem and learn about the poet's dreams.

Beyond, beyond the mountain line,
The grey-stone and the boulder,
Beyond the growth of dark green pine,
That crowns its western shoulder,
There lies that fairy-land of mine,
Unseen of a beholder.

Its fruits are all like rubies rare;
Its streams are clear as glasses;
There golden castles hang in the air,
And purple grapes in masses,
And noble knights and ladies fair
Come riding down the passes.

Ah me! they say if I could stand
Upon those mountain ledges,
I should but see on either hand
Plain fields and dusty hedges;
And yet I know my fairy-land
Lies somewhere o'er their edges.

—C. F. Alexander



Words to know

beyond = further than; **boulder** = huge rock, big stone; **crowns** = covers; **beholder** = observer; **one who looks**; **rare** = scarcely available; **castle** = large palace with a fort where kings live; **in masses** = in large numbers; **knights** = noble men in the royal court; **passes** = narrow roads through the mountains; **ledges** = narrow shelf-like projections on mountains; **hedges** = fence of deep bushes or shrubs.

EXERCISE ZONE

Lesson Insight

Test Your Comprehension

A. Multiple Choice Questions (MCQ'S)

Tick (✓) the correct options:

- Beyond the _____ of dark green pine.
(a) woods (b) growth (c) cluster
- Its fruits are all like _____ rare.
(a) diamonds (b) pearls (c) rubies
- There golden _____ hang in the air.
(a) castles (b) eagles (c) rays

B. Answer the following questions:

- Where does the fairy-land of the poet lie?
- What have the fruits been compared to?
- How do the streams look?

C. Write 'T' for true and 'F' for false statements:

- The dark green pine trees surround the fairy-land.
- The noble knights and beautiful ladies come through the passes.
- The poet can never see the fairy-land.

D. Explain the following stanzas:

- 'There golden castles hang in the air,
And purple grapes in masses.'
- 'And yet I know my fairy-land
Lies somewhere o'er their edges.'

Sharpen Your Vocabulary

A. Give antonyms for each of the following words:

Column 'A'

- beyond
- growth
- unseen
- noble
- fair

Column 'B'

B. Give two synonyms for each of the following words:

- | | | |
|------------|-------|-------|
| 1. boulder | _____ | _____ |
| 2. castle | _____ | _____ |
| 3. rear | _____ | _____ |
| 4. ledge | _____ | _____ |
| 5. dusty | _____ | _____ |

C. Use the following words and make meaningful sentences of your own:

- | | | |
|-----------|---|-------|
| 1. grey | : | _____ |
| 2. pine | : | _____ |
| 3. stream | : | _____ |
| 4. riding | : | _____ |
| 5. either | : | _____ |

Time for Activities

A. Give a brief summary of the poem.

B. Everybody dreams something or the other in life. Work in groups and discuss about the dreams you see. Also discuss about the steps one should take to realize one's dreams.